

FCS47 T5 Double Swivel

The T5 double swivel sits underneath the existing double seat and allows the seat to be turned through 180 degrees to face into the rear of the vehicle and become part of the living area. The unit has been tested to comply with 76/115/EEC as amended by 2005/41/EC for M12 category when mounted on a rigid structure.



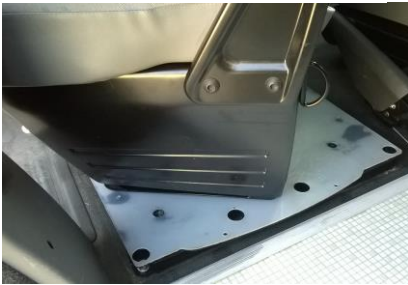
Double seat in its forward facing position.



Lift the lid of the seat to access 3 of the hand wheels. Spin these until they release from the bottom plate. Lift over internal rib and position at an angle to aid rotation.



Start by pushing the set unit forward.



Then push towards front of the vehicle and left.



Then square it back up and move to the left.



The seat view from the passenger door.



Line up the holes at the front on the curved edge, this will then line up all holes internally to allow it to be screwed back into position.



Once turned into position lift the lid again to access the hand wheels.



Lift hand wheels back into the vertical plane and screw the hand wheels back down to secure the seat into position.



Please see our video of the double swivel in use in a VW T5 Van at our website www.frocesterengineering.co.uk

For availability or to place an order call 01934 751242 or email office@frocesterengineering.co.uk